



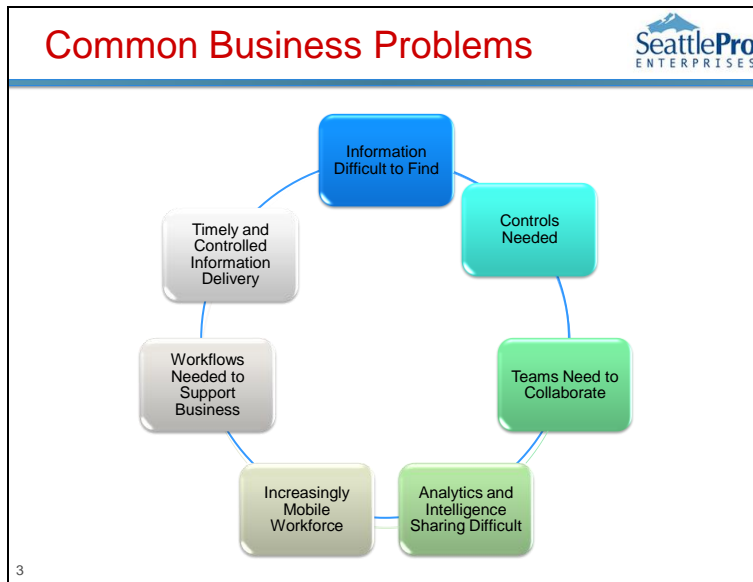
Common Business Problems



- A. Duplicate information
- B. Information is difficult to find
- C. Everyone organizes their data differently
- D. People store data in different locations, such as Outlook or Excel

Q: What is the most common problem employees are facing today?

A: Information is difficult to find



Common Business Problems

In most business organizations today, there are many common problems and themes related to the end users. These items include:

Information can be difficult to find between email, file shares, items on the desktop, and so forth.

Controls are needed to handle regulatory compliance, auditing, and information access and protection.

Business teams need to have the ability to collaborate on projects

End users need to have the ability to do more analytics on business situations and gain intelligence that can help them make better decisions.

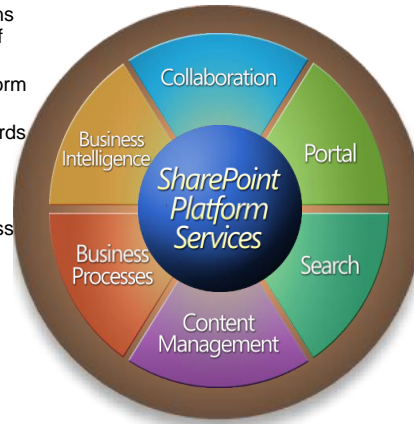
The workforce is increasingly mobile and needs tools to enable offline work and access from mobile devices.

Business organizations thrive on workflows and process. These internal process often don't translate well into file access and usage. End users need information in a timely manner and need to have ways to personalize the information that is delivered.

One of the core themes in all of these common problems is timely and personalized information access. End users need the right information and the right time to be successful in their work. This information can range from documents to emails to business intelligence and analytical information. This is an issue Microsoft has been actively working on since 1998 as Microsoft has developed its solution for these problems and information access – SharePoint.

Solutions on SharePoint

- SharePoint 2007 provides solutions that help automate the world of the Information Worker:
- Intranet/Extranet/Internet platform deployment and migrations
 - Business Intelligence dashboards and reporting
 - Knowledge Management and Collaboration
 - Workflow and Business Process Automation
 - Enterprise Search



4

The Six Pillars of MOSS 2007

1. Collaboration

By integrating Workspaces, Tasks, Forums, Surveys, Blogs, RSS and Wikis, the platform builds on the wild success of the 2003 collaboration features while utilizing the Web 2.0 for the new wave of collaboration and knowledge management applications.

2. Portal

A one stop site for everything enterprise-related. SharePoint is no longer branded as a “portal server” in the 2007 version (though the word is still in the product API Namespace). However, SharePoint still is a portal framework and web parts are still portlets. In fact, this remains one of the primary differentiators between the pay per CAL SharePoint version and the free WSS offering. Some new goodness with Master Pages, new flexibility with a pluggable Single Sign-on architecture, better search, and much improved Visual Studio integration will help on the portal side.

3. Enterprise Search

Search was a bit of a painful thing with SPS 2003, especially when it came to integrating various content stores. The core problems have been addressed and the functionality broadly expanded. MOSS 2007 opens up ACL-aware search across both local and remote data stores with features that enable specialized search for people and expertise. The ability to index and search data in line-of-business apps via the Business Data Store integration is powerful and will please both business managers and developers alike. The new “Best Bets” feature adds a new depth of intelligence.

4. Web & Enterprise Content Management

Microsoft is including core document management, major and minor versioning, check-in/check-out document locking, rich descriptive metadata, workflow (via Windows Workflow Foundation), content type-based policies, auditing, and role-based-access controls at the document library, folder, and individual document levels. The 2007 release builds on these capabilities delivering enhanced authoring, business document processing, Web Content Management and publishing, records management, policy management, and support for multilingual publishing.

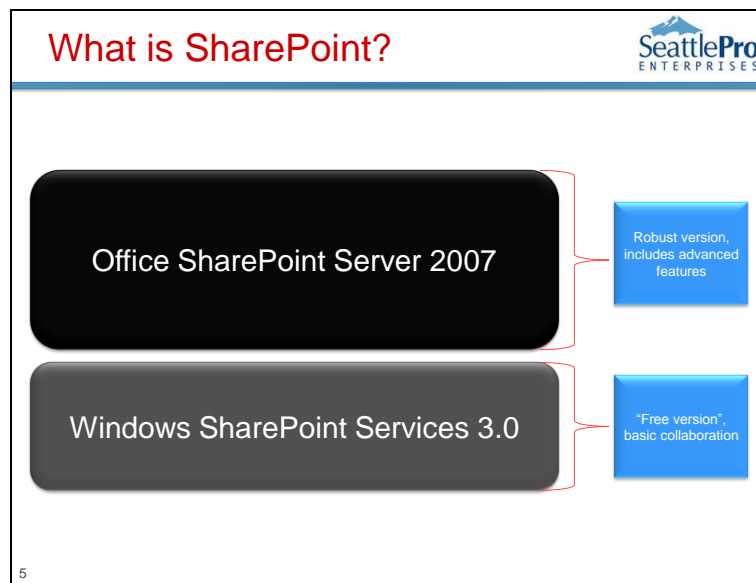
The content management functionalities in MOSS have been expanded broadly and will continue to do so.

5. Forms Driven Business Process

Microsoft has overhauled this aspect of SharePoint with XML driven InfoPath forms that are available on a variety of platforms including portable wireless devices. Client/Server based form maintenance has been centralized and improved for business processes for partner and customers. This area is a dynamic area that captures attention.

6. Business Intelligence

Finally, BI has been improved across the board with web-based dashboards on the macro level, server-based Excel Services and Excel Web Services API's, line of business application and data repository integration, and more sophisticated abilities to monitor key performance indicators. Despite Microsoft's Performance Point BI server, this is one area of MOSS that has the ability to shift the market. SharePoint 2003 transformed workgroup document storage and collaboration. SharePoint 2007 aims to do the same thing with BI. By enabling business users to build-out simple integration, dashboarding, and PKI monitoring MS are definitely looking for the next dimension for SharePoint growth.



Microsoft's Solution – SharePoint


Microsoft's solution to these common business problems is SharePoint. The term "SharePoint" actually refers to two sets of technologies – Windows SharePoint Services (WSS) and Office SharePoint Server (MOSS).

WSS is a free tool that is available for download from Microsoft and is included within Windows Server 2003 R2 and Windows Server 2008. WSS is focused on providing basic team collaboration and document management. Additionally, WSS provides basic searching within the team collaboration sites and tools.

MOSS is an enterprise-class version of the SharePoint technologies that builds on the core features of WSS, but then extends them adding features like enterprise content management, enterprise searching, enterprise forms, and business intelligence tools.

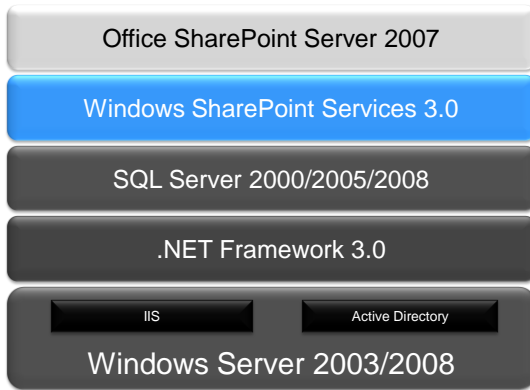

Combined, these tools help address many of the common business problems.

Update on New Technologies



Previous Technology	New Technology
SharePoint Team Services	Windows SharePoint Services
SharePoint Portal Server	Office SharePoint Server
Content Management Server	Office SharePoint Server
Workflow Foundation Server	Office SharePoint Server
FrontPage	Office SharePoint Designer

The WSS/MOSS Platform



Office SharePoint Server 2007

Windows SharePoint Services 3.0

SQL Server 2000/2005/2008

.NET Framework 3.0

IIS Active Directory

Windows Server 2003/2008

7

The WSS/MOSS Platform

The overall platform of WSS and MOSS consists of several key components.

Windows Server

The foundation of the platform is Windows Server 2003 and Windows Server 2008 (Windows Server 2008 is only fully supported with Service Pack 1 for WSS and MOSS). The Windows Server platform

provides components like IIS and Active Directory. Additionally, the platform can be used for clustering, network load balancing, Rights Management, and multiple authentication components.

.NET Framework 2.0/3.0

The .NET Framework sits just above the Windows Server platform and provides core services needed to support SharePoint. ASP.NET 2.0 (a piece of the .NET Framework 2.0) provides the content rendering for the visuals in SharePoint. The Windows Workflow Foundation (a piece of the .NET Framework 3.0) provides the workflow components used throughout both WSS and MOSS.

SQL Server 2000/2005

WSS and MOSS store a majority of their components within SQL Server. When a small deployment is done, the SQL Server component can reside on the same machine as SharePoint. Generally, this should be avoided to prevent problems.


Windows SharePoint Services 3.0

WSS builds on the .NET Framework 2.0/3.0 to render the visual output, allow the application to function, and access workflow components. WSS then provides the authentication foundation components, the collaboration components, and some of the content rendering used by SharePoint.

Office SharePoint Server 2007

MOSS builds on WSS and the other underlying components in the platform to provide more advanced functionality including enterprise content management, business forms, enterprise search, business intelligence, and more. All of these components are built using a standard approach and on the foundation of the WSS platform services.

WSS or MOSS?




Short List

WSS 3.0 Features	MOSS 2007 Features
Blogs	Social Networking
Wikis	Document Workflow
Surveys	Content Syndication
Project Tracking	Site Directory
Issue Tracking	Forms Management
Delegation	Dashboards
Collaboration	Business Intelligence

[Full List](#)

8

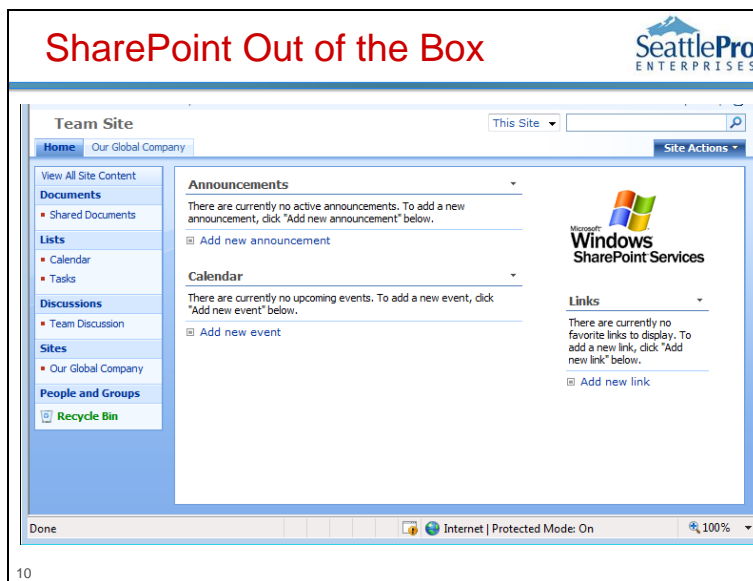
WSS or MOSS?



WSS	MOSS
Small Company Intranet	Medium-Large Company Intranet
Team Site	Internet
Portals	Extranet
Applications	Custom Applications
Basic Document Management	Advanced Document Management
	File Share Replacement


9

There are many different reasons to use SharePoint, but because WSS and MOSS provide different functionality there are different reasons to use the technologies. Above is a list of the types of sites that are best for the two technologies.



SharePoint Out of the Box – This is an example of a Team Site template with no customizations. Each template comes with specific lists, libraries, and Web parts. The team site template comes with the Announcements list, Calendar list, Tasks list, Links lists, Shared Documents library, and Team Discussion.

SharePoint Applications




Absence and Vacation Schedule	Board of Directors
<ul style="list-style-type: none"> Bug Database Call Center Contacts Management Compliance Process Support Site Document Library and Review Event Planning Expense Reimbursement and Approval Site Help Desk Inventory Tracking IT Team Workspace Job Requisition and Interview Management Knowledge Base Lending Library Physical Asset Tracking and Management Change Request Management Budgeting and Tracking Multiple Projects Project Tracking Workspace Room and Equipment Reservations Sales Lead Pipeline 	<ul style="list-style-type: none"> Business Performance Reporting Case Management for Government Agencies Classroom Management Clinical Trial Initiation and Management Community Starter Kit 1.0 Competitive Analysis Site Discussion Database Disputed Invoice Management Employee Activities Site Employee Self-Service Benefits Employee Training Scheduling and Materials Equity Research Integrated Marketing Campaign Tracking New Store Opening Product and Marketing Requirements Planning Request for Proposal Sports League Team Work Site Timecard Management

11

Many people think of SharePoint as a Web technology used for intranets. Although SharePoint is extremely useful in this application, it also has many other capabilities. You need to think of SharePoint 2007 more of an application running in a browser. There are many application templates that come as free downloads.

SharePoint Applications



Sample Classroom Management Site This Site

Home

View All Site Content

Documents

- Shared Documents

Lists

- Assignments and Events
- Tasks
- Course Syllabus
- Student Information

Discussions

- Class Discussion

Sites

People and Groups

[Recycle Bin](#)

Welcome to Class 101!

We'll use this site to keep track of upcoming assignments, tests, and class events.

Quick Links

1. List of all assignments
2. Course syllabus

Announcements

There are currently no active announcements. To add a new announcement, click "Add new announcement" below.

[Add new announcement](#)

Upcoming Assignments and Events

There are currently no upcoming events. To add a new event, click "Add new event" below.


[Add new event](#)

Class Discussion

Subject

There are no items to show in this view of the "Class Discussion" discussion board. To create a new item, click "Add new discussion" below.

[Add new discussion](#)



Class Documents

Type	Name	Modified By
There are no items to show in this view of the "Shared Documents" document library. To create a new item, click "Add new document" below.		
Add new document		

Tasks

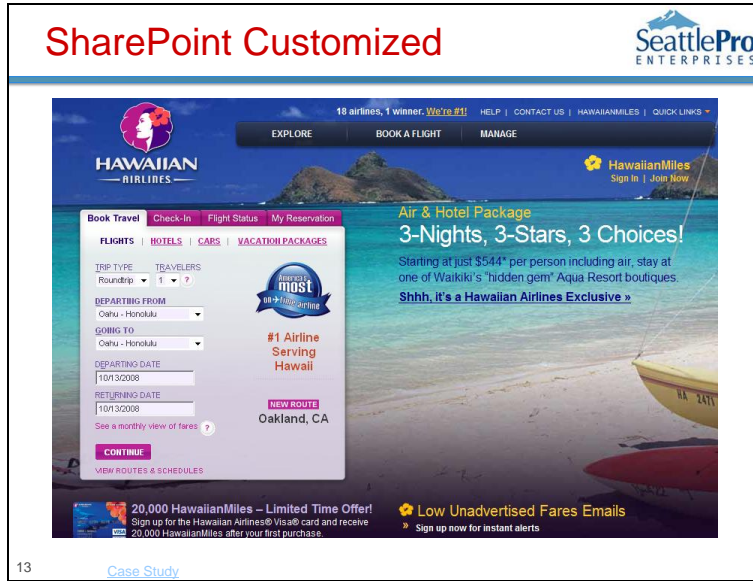
Title	Assigned To
There are no items to show in this view of the "Tasks" list. To create a new item, click "Add new item" below.	
Add new item	

Useful Links

There are currently no favorite links to display. To add a new link, click "Add new link" below.

12

Here is an example of a Classroom Management template.



Hawaiian Airlines select SharePoint 2007 to service their customers on their public Web site. This is a great example of how you can use SharePoint Designer to customize the look of your site.



The Chicago Public Schools selected SharePoint 2007 to service their 655 schools and over 408,000 students. Teachers, students, and parents can use the Web site to post homework, see the students progress, upload homework, register for school, register for classes, and much more.



The Chicago Visitors Bureau uses SharePoint 2007 for their public facing Web site. You will also notice that this site has translation features and will display in over 15 languages.

Take a Test Drive

- What's New
<http://www.microsoft.com/technet/windowsserver/sharepoint/techref/versions.mspx>
- Check it out
<http://office.microsoft.com/en-us/sharepointtechnology/FX100503841033.aspx>
- Virtual Labs
<http://www.microsoft.com/technet/traincert/virtualallab/office.mspx>
- Case Studies
<http://www.shareesblog.com/?p=228>
- Resources
[SharePoint User Group](#)

Training Options for SharePoint 2007

Course	Audience	Length
SharePoint Bootcamp	Network Administrators	5 days Hands-on with Labs
SharePoint Business Managers	Site Administrators	5 days Hands-on with Labs
Windows SharePoint Services Level 1	End Users	2 days Hands-on with Labs
Windows SharePoint Services Level 2	Site Administrators	2 days Hands-on with Labs
Customizing SharePoint using SharePoint Designer	Site Designers	4 days Hands-on with Labs
Developing InfoPath Forms for SharePoint	Site Administrators, Site Designers, End Users	4 days Hands-on with Labs